

How is preschool language related to reading?

Researchers at City, University of London have started a new exciting research study called “**Preschool Language and Literacy**” and we are looking for nurseries to participate.

We aim to understand how preschool language and emerging literacy skills are related to later reading ability.



Why is this research important?

Some hearing children and many deaf children find learning to read challenging.

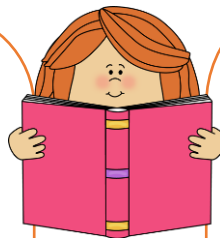
It is therefore important to identify children who may struggle with reading BEFORE they start learning to read. Early identification will help ensure that children who need it have appropriate support as they begin learning to read.

What will happen if our nursery takes part?

If children in your nursery take part in the project, we will assess them on a range of tasks which measure early language skills. This will be done over 3 short sessions which last about 20 mins each. All assessments are child-friendly, age-appropriate and fun for children to complete. We will re-test all the children when they are in reception and year one

Do you know any deaf and hearing children who:

- ✓ Are 3-4 years old
- ✓ Use spoken language
- ✓ Have no significant additional educational needs



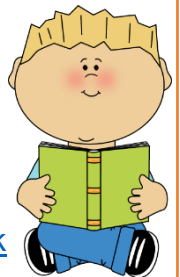
If you are a parent or professional who knows a child who could take part and would like to get involved, please contact:

Dr Katie Mason and Indie Beedie

Division of Language & Communication Science
School of Health Sciences
City, University of London
Northampton Square
London EC1V 0HB

Email: Kathryn.mason@city.ac.uk
Inderjit.beedie@city.ac.uk

Phone: 020 7040 0414



Follow us on Twitter for updates [@Ladder_Lab](https://twitter.com/Ladder_Lab)

Or visit our website: www.ladder-lab.com



The project is being run by Dr Fiona Kyle, Prof Ros Herman, Dr Katie Mason and Indie Beedie, with funding from the Heather van der Lely Foundation